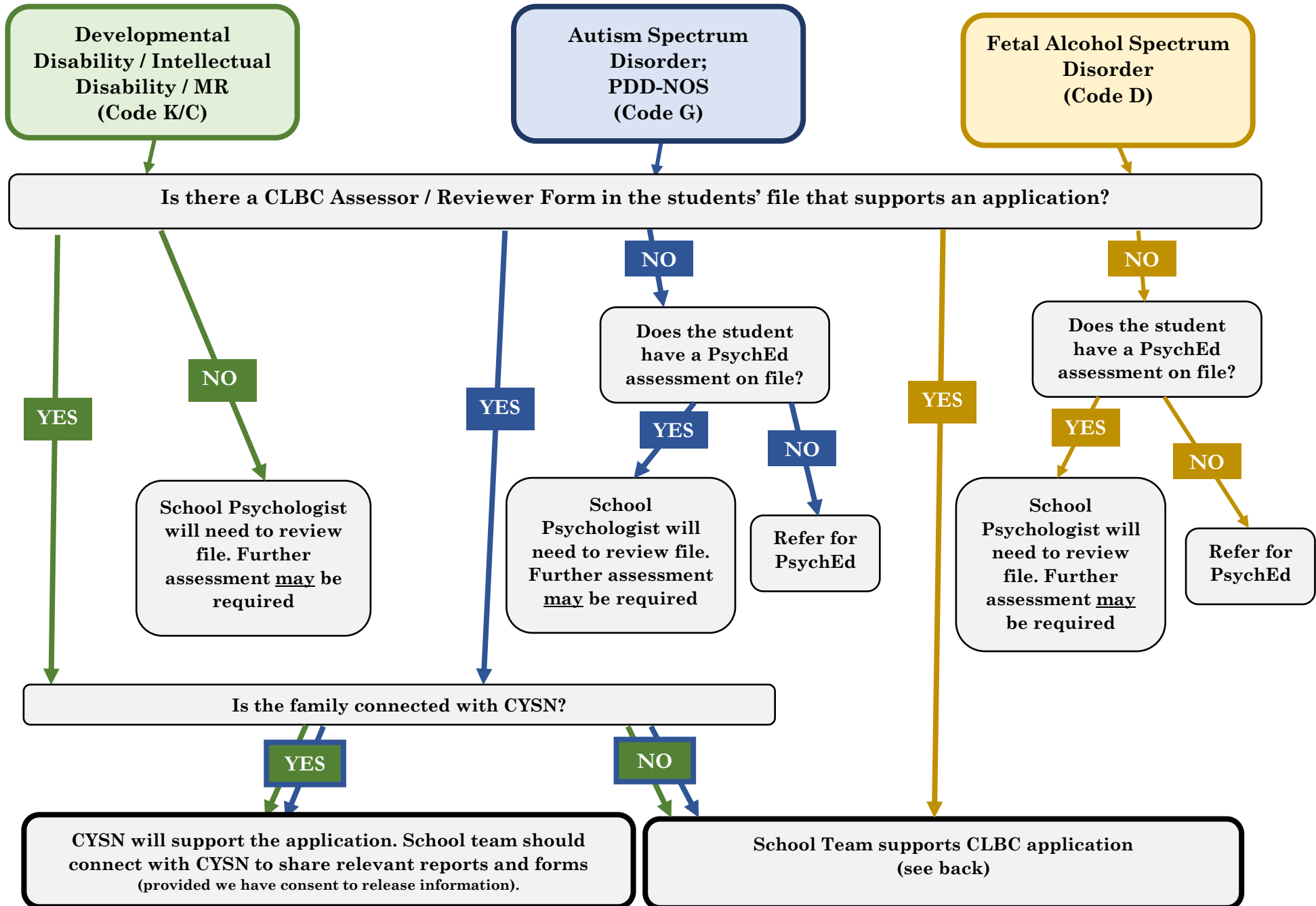


Community Living BC Application Planning at the School Level: School District 8

Grades 9 +: Every fall, review caseload red binders for students who meet the following criteria. Applications are submitted age 16+, but pre-planning is necessary to ensure we have appropriate assessments in place.



School Supported CLBC Applications – Sd8 East:

Applications to be completed as soon after a student's 16th birthday as possible

1. Secure CLBC Assessor/Reviewer form from Psychologist
2. Meet with family to review CLBC, provide with a CLBC package, and see if they are interested
3. If family is interested, complete the referral form with them, including the pages for consent to release/receive info with CLBC
4. Phone CLBC Cranbrook Intake Office to initiate the intake (Phone: (250)426-1282)
5. Mail the application package, which should include:
 - CLBC Referral Form
 - CLBC Assessor/Reviewer Form
 - Psychoeducational / Medical Assessments
 - A current IEP/support plan if relevant to show student's current needs

Mailing Address:

Community Living BC
Suite 200
1212 2nd street
Cranbrook, BC
V1C 4T6

If the consent to release info was signed, then CLBC will let the school team know the results of the application. Once approved, a local facilitator will be assigned.

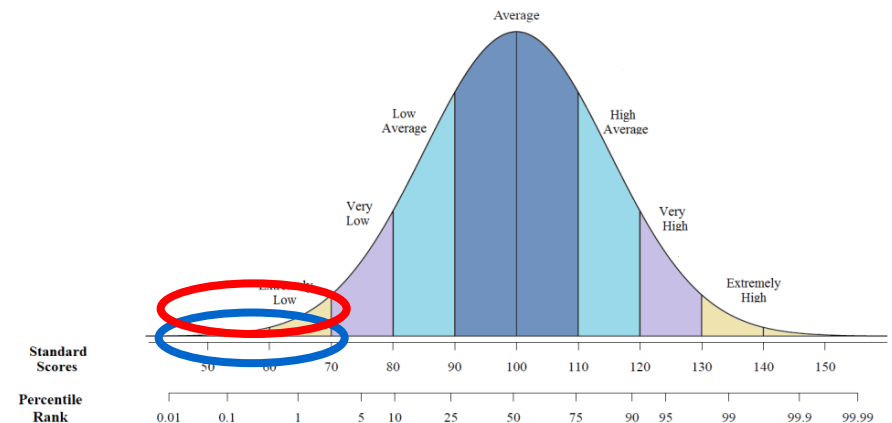
Contact Inclusion Support Teacher or School Psychologist if you have any questions.

NOTE: We support applications only. CLBC makes eligibility decisions (important in communication with families)

CLBC Eligibility Streams:

DEVELOPMENTAL DISABILITY

- Diagnosis of DSM-IV MR or DSM-5 Intellectual Disability
- Significant limitations in both **intellectual** and **adaptive** functioning



PERSONALIZED SUPPORTS INITIATIVE

- Diagnosis of either ASD/PDD or FASD and significant limitations in **adaptive** functioning
- Student does not meet criteria for DD (above)

